



AK4468

Application Note

1. General Description

This Application Note is intended to assist in designing systems using the AK4468.

2. Table of Contents

1. General Description	1
2. Table of Contents	1
3. Block Diagram	2
4. Comparison Table of D/A Converters	3
4.1. Premium DACs Comparison Table	3
4.2. 8-channel DACs Comparison Table	4
4.3. AK4468 Register Map (Compared with AK4458)	5
5. AK4468 Function List	7
6. Recommended States when Changing Clock Frequency or Pin/Register Setting	8
6.1. Clock Frequency	8
6.2. Control Pin Setting (Pin Control Mode)	8
6.3. Register Setting (Register Control Mode)	9
7. Latency in Each Playback Mode	10
7.1. PCM mode	10
7.2. DSD mode	11
8. Design of Analog Output Post-Circuit	12
8.1. Calculation of the DC load resistance	12
8.2. Filter Design	14
9. Revision History	15
IMPORTANT NOTICE	15

3. Block Diagram

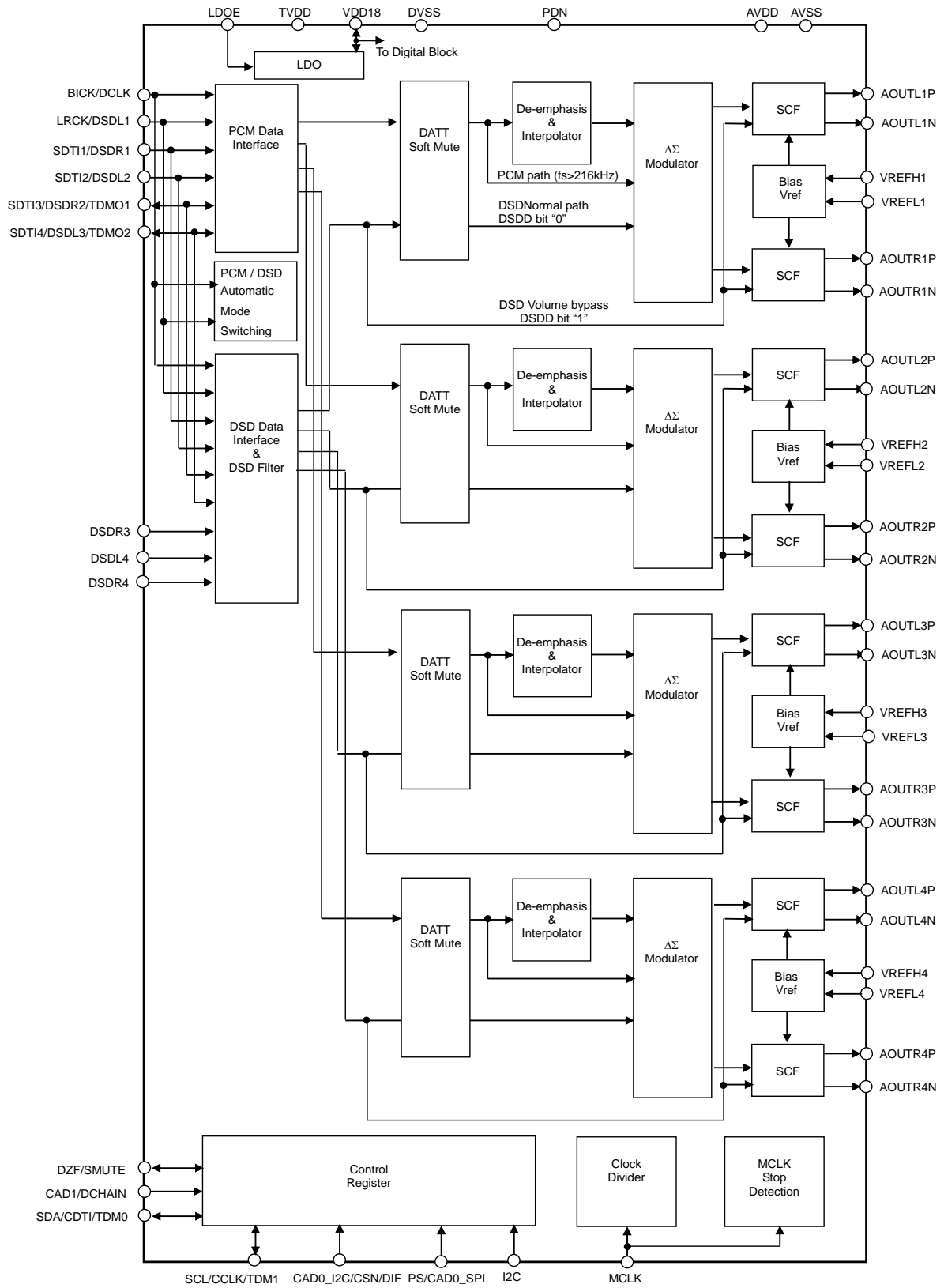


Figure 1. AK4468 Block Diagram

4. Comparison Table of D/A Converters
--

4.1. Premium DACs Comparison Table

Table 1 shows a comparison table of Premium DACs featuring AKM's LSI manufacturing process for premium audio.

Table 1. AKM Premium DAC Comparison Table (Y: Available, N/A: Not available)

	AK4499	AK4497	AK4493	AK4462	AK4468
AVDD	4.75–5.25 V	1.7–3.6 V	1.7–3.6 V	3.0–5.5 V	3.0–5.5 V
VDDL/R	4.75–5.25 V	4.75–5.25 V	4.75–5.25 V	-	-
TVDD	1.7–3.6 V	1.7–3.6 V	1.7–3.6 V	1.7–3.6 V	1.7–3.6 V
Channels	4	2	2	2	8
Output type	Balanced	Balanced	Balanced	Balanced	Balanced
PCM sampling rate	8–768 kHz	8–768 kHz	8–768 kHz	8–768 kHz	8–768 kHz
DSD sampling rate (max.)	DSD512	DSD512	DSD512	DSD512	DSD512
DoP sampling rate (max.)	N/A	N/A	N/A	DoP256	N/A
S/N	134 dB	128 dB	123 dB	117 dB	117 dB
THD+N	-124 dB	-116 dB	-113 dB	-107 dB	-107 dB
Digital Filter (@PCM mode)	6 types	6 types	6 types	6 types	6 types
External Filter Mode	Y	Y	Y	N/A	N/A
TDM	Y	Y	Y	Y	Y
Daisy Chain	Y	Y	N/A	N/A	Y
Automatic Switching (PCM/DSD mode)	Y	N/A	Y	Y	Y
Automatic Switching (PCM/DoP mode)	N/A	N/A	N/A	Y	N/A
Power Consumption	667 mW	343 mW	188 mW	70 mW	245 mW
Package	128-pin HTQFP	64-pin HTQFP	48-pin LQFP	24-pin QFN	48-pin QFN

4.2. 8-channel DACs Comparison Table

The comparison table of 8-channel DAC Series is shown in [Table 2](#).

Table 2. Function and Characteristics Comparison Table of AK4438, AK4458 and AK4468
(Y: Available, N/A: Not available)

	AK4438	AK4458	AK4468
LSI Process for Premium Audio	N/A	N/A	Y
AVDD	3.0–3.6 V	3.0–5.5 V	3.0–5.5 V
TVDD	1.7–3.6 V	1.7–3.6 V	1.7–3.6 V
Power Consumption	102 mW	181 mW	245 mW
Output type	Single-Ended	Balanced	Balanced
PCM sampling rate	8–768 kHz	8–768 kHz	8–768 kHz
DSD sampling rate (max.)	N/A	DSD256	DSD512
S/N	108 dB	115 dB	117 dB
THD+N	–91 dB	–107 dB	–107 dB
Digital Filter (@PCM mode)	5 types	5 types	6 types
De-emphasis Filter	Y	Y	Y
TDM	Y	Y	Y
Daisy Chain	N/A	Y	Y
Clock Synchronization Function	Y	Y	Y
Automatic Mode Switching (PCM/DSD mode)	N/A	N/A	Y
Package (Note 1)	32-pin QFN	48-pin QFN	48-pin QFN
Pin/Register control select	Y	Y	Y

Note 1. The AK4468 is pin compatible with the AK4458.

4.3. AK4468 Register Map (Compared with AK4458)

Register maps of the AK4468 and the AK4458 are shown in Table 3 and Table 4.

※yellow: Added in the AK4468 blue: Removed in the AK4468 green: Rearranged in the AK4468

Table 3. AK4468 Register Map

Addr	Register Name	D7	D6	D5	D4	D3	D2	D1	D0
00H	Control 1	ACKS	0	0	0	DIF[2]	DIF[1]	DIF[0]	RSTN
01H	Control 2	0	0	SD	DFS[1]	DFS[0]	DEM1[1]	DEM1[0]	SMUTE
02H	Control 3	DP	ADP	DCKS	DCKB	MONO1	DZFB	SELLR1	SLOW
03H	L1ch ATT	ATTL1[7]	ATTL1[6]	ATTL1[5]	ATTL1[4]	ATTL1[3]	ATTL1[2]	ATTL1[1]	ATTL1[0]
04H	R1ch ATT	ATTR1[7]	ATTR1[6]	ATTR1[5]	ATTR1[4]	ATTR1[3]	ATTR1[2]	ATTR1[1]	ATTR1[0]
05H	Control 4	INVL1	INVR1	INVL2	INVR2	SELLR2	0	DFS[2]	SSLOW
06H	DSD1	DDM	DML1	DMR1	DDMOE	0	DDMT	DSDD	DSDSEL[0]
07H	Control 5	L3	R3	L4	R4	0	0	1	SYNCE
08H	Control 6	L1	R1	L2	R2	0	0	0	0
09H	DSD2	DML2	DMR2	DML3	DMR3	DML4	DMR4	DSDF	DSDSEL[1]
0AH	Control 7	TDM[1]	TDM[0]	SDS[1]	SDS[2]	PW2	PW1	DEM2[1]	DEM2[0]
0BH	Control 8	ATS[1]	ATS[0]	0	SDS[0]	PW4	PW3	DCHAIN	0
0CH	Control 9	INVL4	INVR4	INVL3	INVR3	0	0	0	0
0DH	Control 10	MONO4	MONO3	MONO2	0	SELLR4	SELLR3	0	0
0EH	Control 11	DEM4[1]	DEM4[0]	DEM3[1]	DEM3[0]	0	0	0	0
0FH	L2ch ATT	ATTL2[7]	ATTL2[6]	ATTL2[5]	ATTL2[4]	ATTL2[3]	ATTL2[2]	ATTL2[1]	ATTL2[0]
10H	R2ch ATT	ATTR2[7]	ATTR2[6]	ATTR2[5]	ATTR2[4]	ATTR2[3]	ATTR2[2]	ATTR2[1]	ATTR2[0]
11H	L3ch ATT	ATTL3[7]	ATTL3[6]	ATTL3[5]	ATTL3[4]	ATTL3[3]	ATTL3[2]	ATTL3[1]	ATTL3[0]
12H	R3ch ATT	ATTR3[7]	ATTR3[6]	ATTR3[5]	ATTR3[4]	ATTR3[3]	ATTR3[2]	ATTR3[1]	ATTR3[0]
13H	L4ch ATT	ATTL4[7]	ATTL4[6]	ATTL4[5]	ATTL4[4]	ATTL4[3]	ATTL4[2]	ATTL4[1]	ATTL4[0]
14H	R4ch ATT	ATTR4[7]	ATTR4[6]	ATTR4[5]	ATTR4[4]	ATTR4[3]	ATTR4[2]	ATTR4[1]	ATTR4[0]
15H	Control 12	ADPE	ADPT[1]	ADPT[0]	0	0	0	0	0

Table 4. AK4458 Register Map

Addr	Register Name	D7	D6	D5	D4	D3	D2	D1	D0
00H	Control 1	ACKS	0	0	0	DIF[2]	DIF[1]	DIF[0]	RSTN
01H	Control 2	0	0	SD	DFS[1]	DFS[0]	DEM1[1]	DEM1[0]	SMUTE
02H	Control 3	DP	0	DCKS	DCKB	MONO1	DZFB	SELLR1	SLOW
03H	L1ch ATT	ATTL1[7]	ATTL1[6]	ATTL1[5]	ATTL1[4]	ATTL1[3]	ATTL1[2]	ATTL1[1]	ATTL1[0]
04H	R1ch ATT	ATTR1[7]	ATTR1[6]	ATTR1[5]	ATTR1[4]	ATTR1[3]	ATTR1[2]	ATTR1[1]	ATTR1[0]
05H	Control 4	INVL1	INVR1	INVL2	INVR2	SELLR2	0	DFS[2]	SSLOW
06H	DSD1	DDM	DML1	DMR1	DMC	DMRE	0	DSDD	DSDSEL[0]
07H	Control 5	L3	R3	L4	R4	0	0	1	SYNCE
08H	Sound Control	L1	R1	L2	R2	0	0	SC[1]	SC[0]
09H	DSD2	DML2	DMR2	DML3	DMR3	DML4	DMR4	DSDF	DSDSEL[1]
0AH	Control 6	TDM[1]	TDM[0]	SDS[1]	SDS[2]	PW2	PW1	DEM2[1]	DEM2[0]
0BH	Control 7	ATS[1]	ATS[0]	0	SDS[0]	PW4	PW3	DCHAIN	0
0CH	Control 8	INVR4	INVL4	INVR3	INVL3	0	FIR[2]	FIR[1]	FIR[0]
0DH	Control 9	MONO4	MONO3	MONO2	0	SELLR4	SELLR3	0	0
0EH	Control 10	DEM4[1]	DEM4[0]	DEM3[1]	DEM3[0]	0	0	0	0
0FH	L2ch ATT	ATTL2[7]	ATTL2[6]	ATTL2[5]	ATTL2[4]	ATTL2[3]	ATTL2[2]	ATTL2[1]	ATTL2[0]
10H	R2ch ATT	ATTR2[7]	ATTR2[6]	ATTR2[5]	ATTR2[4]	ATTR2[3]	ATTR2[2]	ATTR2[1]	ATTR2[0]
11H	L3ch ATT	ATTL3[7]	ATTL3[6]	ATTL3[5]	ATTL3[4]	ATTL3[3]	ATTL3[2]	ATTL3[1]	ATTL3[0]
12H	R3ch ATT	ATTR3[7]	ATTR3[6]	ATTR3[5]	ATTR3[4]	ATTR3[3]	ATTR3[2]	ATTR3[1]	ATTR3[0]
13H	L4ch ATT	ATTL4[7]	ATTL4[6]	ATTL4[5]	ATTL4[4]	ATTL4[3]	ATTL4[2]	ATTL4[1]	ATTL4[0]
14H	R4ch ATT	ATTR4[7]	ATTR4[6]	ATTR4[5]	ATTR4[4]	ATTR4[3]	ATTR4[2]	ATTR4[1]	ATTR4[0]

■ The functions added in the AK4468

- 02H D6: ADP
Readback register for internal PCM/DSD operation mode. This bit is valid when ADPE bit = "1".
- 06H D4: DDMOE
Output Flag selection from the DZF pin
- 06H D2: DDMT
DSD Signal Full-scale Detection Time setting
- 15H D7: ADPE
PCM/DSD Automatic Mode Switching function enable bit
- 15H D[6:5]: ADPT[1:0]
Time until PCM/DSD mode detection when input data becomes zero

5. AK4468 Function List

Table 5 shows the functions available in PCM/DSD modes. For details on how to use each function, refer to the corresponding sections of the AK4468 datasheet in Datasheet Section column. In Pin Control mode, only a few functions are available. Refer to the section 9.1 in the datasheet for the functions available in Pin Control mode.

Table 5. Function List of PCM/DSD mode @Register Control Mode
(Y: Available, N/A: Not available)

Function	Addr	Bit	PCM	DSD		Data-sheet Section
				Normal	Volume Bypass	
PCM/DSD Mode Selection	02H	DP	Y	Y	Y	9.2
System Clock Setting @PCM mode	00, 01, 05H	ACKS DFS[2:0]	Y	N/A	N/A	9.3.1
System Clock Setting @DSD mode	02H	DCKS	N/A	Y	Y	9.3.2
Digital Filter Selection @PCM mode	01, 02, 05H	SD, SLOW SSLOW	Y (Note 2)	N/A	N/A	9.5.1
Digital Filter Selection @DSD mode	09H	DSDf	N/A	Y	N/A	9.5.2
De-emphasis Filter	01, 0A, 0EH	DEM1/2/3/4[1:0]	Y (Note 3)	N/A	N/A	9.6
Path Selection @ DSD mode	06H	DSDD	N/A	Y	Y	9.3.2
Audio Data Interface Format @ PCM mode	00H	DIF[2:0]	Y	N/A	N/A	9.4.1.2
TDM Interface Format	0AH	TDM[1:0]	Y	N/A	N/A	9.4.1.2
Daisy Chain	0BH	DCHAIN	Y	N/A	N/A	9.4.1.4
Attenuation Level	03, 04, 0F-14H	ATTL1/2/3/4[7:0] ATTR1/2/3/4[7:0]	Y	Y	N/A	9.7
Data Zero Detection Enable	07-08H	L1/2/3/4 R1/2/3/4	Y	Y	N/A	9.8.1
Mono/Stereo Mode Selection	02, 0DH	MONO1/2/3/4	Y	Y	Y	9.9
Data Invert Mode Selection	05, 0CH	INVL1/2/3/4 INVR1/2/3/4	Y	Y	Y	9.9
The data Selection of L Channel and R Channel	02, 05, 0DH	SELLR1/2/3/4	Y	Y	Y	9.9
DSD Mute Function @ Fullscale Detected	06H	DDM	N/A	Y	Y	9.8.2
Soft Mute	01H	SMUTE	Y	Y	Y	9.11
RSTN	00H	RSTN	Y	Y	Y	9.14
Clock Synchronization Function	07H	SYNCE	Y	N/A	N/A	9.15
Automatic Mode Switching (PCM/DSD mode)	15H	ADPE	Y	Y	Y	9.10

Note 2. The digital filter is fixed to super slow roll-off filter in Oct Speed Mode and Hex Speed Mode.

Note 3. Only available in Normal Speed Mode.

6. Recommended States when Changing Clock Frequency or Pin/Register Setting

Power Down, Standby and Reset functions of the AK4468 are controlled by PDN pin, PW1/2/3/4 bits, MCLK and RSTN bit (Table 6).

Table 6. Power Down, Standby, and Reset function (x: do not care)

State	PDN pin	MCLK Input	PW1/2/3/4 bits	RSTN bit	Analog Output
Power Down	L	x	x	x	Hi-Z
Standby	H	No	x	x	Hi-Z
	H	Yes	0	x	Hi-Z
Reset	H	Yes	1	0	(VREFH1/2/3/4 +VREFL1/2/3/4)/2
Normal Operation	H	Yes	1	1	Signal output

This chapter describes which states the AK4468 should be in when changing clock frequency, control pin settings and register settings.

6.1. Clock Frequency

Table 7 shows the states that are allowed when changing the clock frequencies or are stopped.

Table 7. Permitted States When Changing Clock Frequencies
(Y: Permitted, N/A: Not Permitted)

Clock	Power Down	Standby	Reset	Normal Operation	Notes
MCLK frequency	Y	Y	Y	N/A	-
BICK frequency	Y	Y	Y	N/A	Note 4 Note 5
LRCK frequency	Y	Y	Y	N/A	Note 4 Note 5
DCLK frequency	Y	Y	Y	N/A	Note 5

Note 4. When ACKS bit = "0", BICK and LRCK frequencies must be changed in the standby or reset state. It is possible to change BICK and LRCK frequencies during normal operation when ACKS bit = "1", but click noise may occur. This click noise can be avoided by the external mute circuit.

Note 5. When the AK4468 is in the auto-switching functions (ADPE bit = "1"), being in reset state is not necessarily required for switching the D/A conversion mode. Use these functions according to the procedures described in section 9.10 in the datasheet.

6.2. Control Pin Setting (Pin Control Mode)

Table 8 shows the states that are allowed when changing the pin settings in pin control mode.

Table 8. Permitted States When Changing Control Pin Settings (Pin Control Mode)
(Y: Permitted, N/A: Not Permitted)

Pin	Power Down	Standby	Normal Operation	Notes
DIF	Y	Y	N/A	-
SMUTE	Y	Y	Y	-
TDM0/1	Y	Y	N/A	-
DCHAIN	Y	Y	N/A	-

6.3. Register Setting (Register Control Mode)

Table 9 shows the states that are allowed when changing register settings in register control mode.

Table 9. Permitted States When Changing Register Settings (Register Control Mode)
(Y: Permitted, N/A: Not Permitted)

Register	Standby	Reset	Normal Operation	Notes
DIF[2:0]	Y	Y	N/A	-
ACKS	Y	Y	N/A	-
SMUTE	Y	Y	Y	-
DEM1/2/3/4[1:0]	Y	Y	Y	Note 6
DFS[2:0]	Y	Y	N/A	-
SD, SLOW, SSLOW	Y	Y	N/A	Note 7
SELLR1/2/3/4	Y	Y	Y	Note 6
DZFB	Y	Y	Y	-
MONO1/2/3/4	Y	Y	Y	Note 6
DCKB	Y	Y	N/A	-
DCKS	Y	Y	N/A	-
DP	Y	Y	N/A	-
ATTL1/2/3/4[7:0] ATTR1/2/3/4[7:0]	Y	Y	Y	-
INVL1/2/3/4 INVR1/2/3/4	Y	Y	Y	Note 6
DSDSEL[1:0]	Y	Y	N/A	-
DSDD	Y	Y	N/A	-
DDMT	Y	Y	N/A	-
DDMOE	Y	Y	Y	-
DDM	Y	Y	N/A	-
SYNCE	Y	Y	N/A	-
L1/2/3/4, R1/2/3/4	Y	Y	Y	-
DSDF	Y	Y	Y	Note 6
SDS[2:0]	Y	Y	Y	Note 6
TDM[1:0]	Y	Y	N/A	-
DCHAIN	Y	Y	N/A	-
ATS[1:0]	Y	Y	Y	Note 8
ADPT[1:0]	Y	Y	N/A	-
ADPE	Y	Y	N/A	-

Note 6. When switching in the normal operation state, it is recommended to switch at zero-data input or soft-mute state by SMUTE bit = "1" in order to avoid click noise during switching.

Note 7. Click noise may occur when the digital filter setting is changed. If click noise can be avoided by the external mute circuit, digital filter setting can be changed during normal operation.

Note 8. Do not change the ATS[1:0] bits while operating gain transition by SMUTE bit, ATTL[7:0] bits and ATTR[7:0] bits switching.

7. Latency in Each Playback Mode

Latency is the internal processing time it takes for the input digital data to be output as an analog signal.

7.1. PCM mode

Latency in PCM mode is the time from when the impulse data is set in the input register until the peak of the analog signal is output (Figure 2). The latency at PCM mode is the sum of the digital filter group delay and the other operational delays shown below.

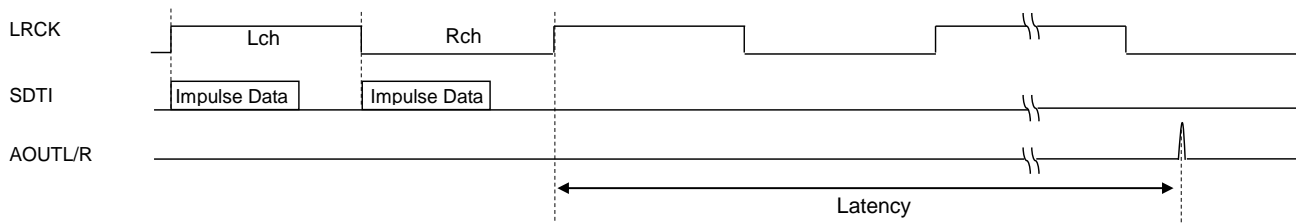


Figure 2. PCM mode Latency

In PCM mode, group delays such as Table 10 occur according to the settings of the digital filter.

Table 10. Group Delay (PCM mode)

SSLOW bit	SD bit	SLOW bit	Mode	Group Delay (Note 9)
0	0	0	Sharp roll-off filter	26.8/fs
0	0	1	Slow roll-off filter	6.3/fs
0	1	0	Short delay sharp roll-off filter	5.8/fs
0	1	1	Short delay slow roll-off filter	4.8/fs
1	0	x	Super slow roll-off filter	1.0/fs–2.5/fs (Note 10)
1	1	x	Low dispersion short delay filter	10.5/fs

(default)

Note 9. When the AK4468 is in Oct Speed Mode or Hex Speed Mode, Super Slow roll-off filter is selected regardless of SSLOW/SD/SLOW bit setting.

Note 10. 1.0/fs in Normal Speed Mode. It varies in the range of 1.0/fs-2.5/fs depending on the Sampling Speed setting.

When PCM/DSD automatic mode switching function is used (ADPE bit = "1"), a delay of 18/fs occurs due to internal operation (Table 11).

Table 11. Operational Delay Caused by ADPE Setting (PCM mode)

ADPE bit	Operation Delay
0	0/fs
1	18/fs

(default)

In addition, in PCM mode, there is a delay error due to the timing of capturing data at the data interface. The delay error depends on the Synchronization Function (SYNCE bit) setting (Table 12).

Table 12. Delay Error at the Data Interface (PCM mode)

SYNCE bit	Delay Error
0	<±1/fs
1	<±0.3 μs

(default)

(e.g.) Latency when PCM mode, fs = 44.1 kHz, Sharp Roll-off filter, ADPE bit = "1" and SYNCE bit = "0"

$$\text{Latency} = (26.8 + 18 \pm 1)/fs = (44.8 \pm 1)/fs = 1016 \pm 23 \mu\text{s}$$

7.2. DSD mode

Latency in DSD mode is approximately 8 μ s in DSD64 mode, which varies slightly depending on the operation rate and DSD bit.

However, when the DSD full-scale detection function is used (DDM bit = "1"), a register delay described in [Table 13](#) occurs according to DDMT bit setting.

Table 13. Register Delay (DSD mode, x: Do not Care)

DDM bit	DDMT bit	Register Delay
0	x	0
1	0	264 DCLK cycle
1	1	136 DCLK cycle

(default)

(e.g.) Latency when DSD64 (DCLK = 2.8224 MHz), DSD bit = "0", DDM bit = "1", and DDMT bit = "0"

Latency = 8 μ s + 264 DCLK = 102 μ s

8. Design of Analog Output Post-Circuit

8.1. Calculation of the DC load resistance

The external circuit after the analog output pins (AOUTP, AOUTN) must be designed so that its DC load resistance (R_L) complies with the "Load Resistance" specifications given in section 8.1 in the datasheet. The R_L is the effective resistance between the analog output pins and the system analog ground (Figure 3). This section describes how to calculate the DC load resistance by referring to the circuit as shown in Figure 4.

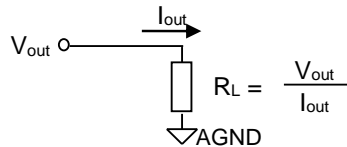


Figure 3. Schematic Diagram of the R_L

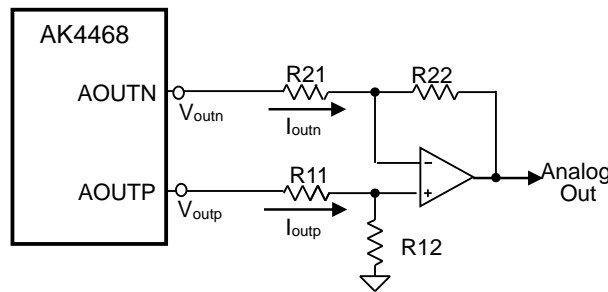


Figure 4. Example of Differential-to-Single Circuit

The R_L is determined by $R_L = V_a / I_a$ from I_a at full-scale current output and output voltage V_a of AOUTx pin (Figure 5). For normal operation of the AK4468, both the R_{Lp} (R_L of AOUTPx pin) and the R_{Ln} (R_L of AOUTNx pin) must satisfy the specification ($R_L \geq 1.4 \text{ k}\Omega$).

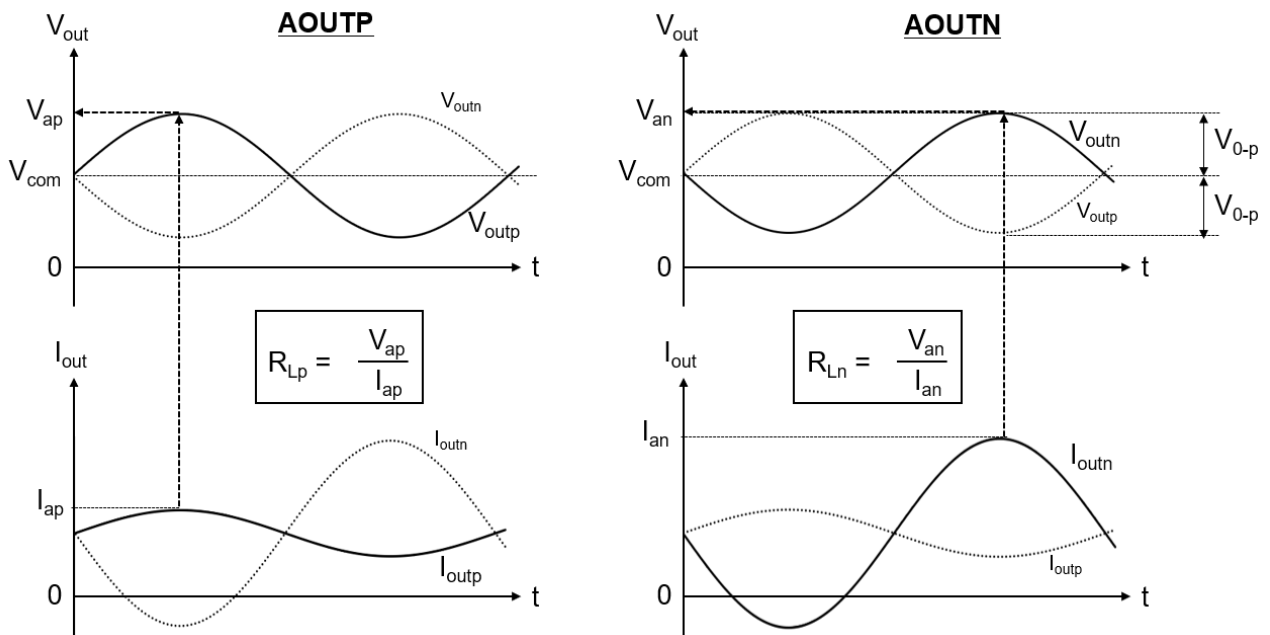


Figure 5. R_{Lp} and R_{Ln} in the Figure 4 Schematic

In [Figure 4](#) case, the R_{Lp} and the R_{Ln} are,

$$R_{Lp} = \frac{V_{ap}}{I_{ap}} = R_{11} + R_{12}$$

$$R_{Ln} = \frac{V_{an}}{I_{an}} = \frac{(V_{com} + V_{0-p})(R_{11} + R_{12})R_{21}}{R_{11}V_{com} + (R_{11} + 2R_{12})V_{0-p}}$$

Where,

$$V_{COM} = 0.5(V_{REFH} - V_{REFL})$$

$$V_{0-p} = 0.28(V_{REFH} - V_{REFL})$$

8.2. Filter Design

The formula for calculating the parameters of the second-order low-pass filter shown in [Figure 6](#) is shown below.

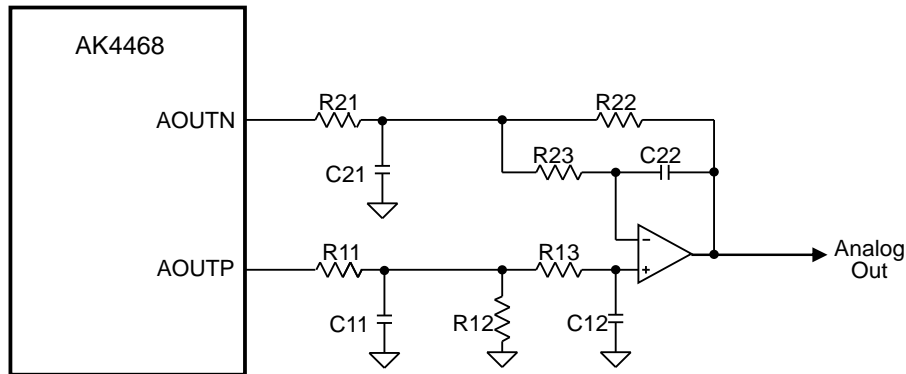


Figure 6. Second-Order Low-Pass Filter Circuit Example

$$DC\ Gain = \frac{0.5(R_{21}R_{12} + R_{11}R_{22}) + R_{12}R_{22}}{R_{21}(R_{11} + R_{12})}$$

$$f_{cp} = \frac{\omega_{0p}}{2\pi}, \quad f_{cn} = \frac{\omega_{0n}}{2\pi}$$

$$\omega_{0p} = \frac{1}{\sqrt{C_{11}C_{12}R_{12}R_{13}}}, \quad \omega_{0n} = \frac{1}{\sqrt{C_{21}C_{22}R_{22}R_{23}}}$$

$$Q_p = \frac{C_{11}\omega_{0p}}{\frac{1}{R_{11}} + \frac{1}{R_{12}} + \frac{1}{R_{13}}}, \quad Q_n = \frac{C_{21}\omega_{0n}}{\frac{1}{R_{21}} + \frac{1}{R_{22}} + \frac{1}{R_{23}}}$$

$$R_{Lp} = \frac{V_{ap}}{I_{ap}} = R_{11} + R_{12}$$

$$R_{Ln} = \frac{V_{an}}{I_{an}} = \frac{(V_{com} + V_{0-p})(R_{11} + R_{12})R_{21}}{R_{11}V_{com} + (R_{11} + 2R_{12})V_{0-p}}$$

9. Revision History

Date (Y/M/D)	Revision	Reason	Page	Contents
20/09/1	01	First Edition		

IMPORTANT NOTICE

0. Asahi Kasei Microdevices Corporation ("AKM") reserves the right to make changes to the information contained in this document without notice. When you consider any use or application of AKM product stipulated in this document ("Product"), please make inquiries the sales office of AKM or authorized distributors as to current status of the Products.
1. All information included in this document are provided only to illustrate the operation and application examples of AKM Products. AKM neither makes warranties or representations with respect to the accuracy or completeness of the information contained in this document nor grants any license to any intellectual property rights or any other rights of AKM or any third party with respect to the information in this document. You are fully responsible for use of such information contained in this document in your product design or applications. AKM ASSUMES NO LIABILITY FOR ANY LOSSES INCURRED BY YOU OR THIRD PARTIES ARISING FROM THE USE OF SUCH INFORMATION IN YOUR PRODUCT DESIGN OR APPLICATIONS.
2. The Product is neither intended nor warranted for use in equipment or systems that require extraordinarily high levels of quality and/or reliability and/or a malfunction or failure of which may cause loss of human life, bodily injury, serious property damage or serious public impact, including but not limited to, equipment used in nuclear facilities, equipment used in the aerospace industry, medical equipment, equipment used for automobiles, trains, ships and other transportation, traffic signaling equipment, equipment used to control combustions or explosions, safety devices, elevators and escalators, devices related to electric power, and equipment used in finance-related fields. Do not use Product for the above use unless specifically agreed by AKM in writing.
3. Though AKM works continually to improve the Product's quality and reliability, you are responsible for complying with safety standards and for providing adequate designs and safeguards for your hardware, software and systems which minimize risk and avoid situations in which a malfunction or failure of the Product could cause loss of human life, bodily injury or damage to property, including data loss or corruption.
4. Do not use or otherwise make available the Product or related technology or any information contained in this document for any military purposes, including without limitation, for the design, development, use, stockpiling or manufacturing of nuclear, chemical, or biological weapons or missile technology products (mass destruction weapons). When exporting the Products or related technology or any information contained in this document, you should comply with the applicable export control laws and regulations and follow the procedures required by such laws and regulations. The Products and related technology may not be used for or incorporated into any products or systems whose manufacture, use, or sale is prohibited under any applicable domestic or foreign laws or regulations.
5. Please contact AKM sales representative for details as to environmental matters such as the RoHS compatibility of the Product. Please use the Product in compliance with all applicable laws and regulations that regulate the inclusion or use of controlled substances, including without limitation, the EU RoHS Directive. AKM assumes no liability for damages or losses occurring as a result of noncompliance with applicable laws and regulations.
6. Resale of the Product with provisions different from the statement and/or technical features set forth in this document shall immediately void any warranty granted by AKM for the Product and shall not create or extend in any manner whatsoever, any liability of AKM.
7. This document may not be reproduced or duplicated, in any form, in whole or in part, without prior written consent of AKM.

Rev.1